

OAK GROVE CHAMBER

Membership Guide

Network & Connect To
Your Community

LET'S GET STARTED!

1300 S. Broadway
PO Box 586
Oak Grove, MO 64075
816-690-4147

info@theogchamber.com
www.theogchamber.com



We're here to help
your business grow!

OUR MISSION

To provide leadership by connecting people, resources, and opportunities within our community to live, work and do business.

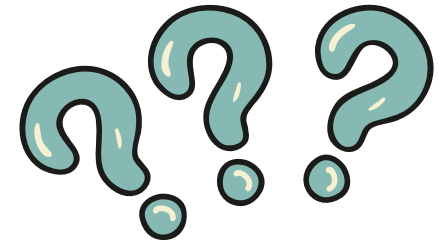
OUR VISION

To work together as a community of businesses, organizations, and residents by providing a platform for networking, workforce development, and business prosperity





Why Join?!



Building business-to-business relationships is critical to the growth of your business and to Oak Grove.

Our community depends on the success of your business, and your business depends on community support.



Nearly 2500 followers on Social Media + Promote your business



Business Resources + Professional Development Opportunities



Networking Opportunities + Social Gatherings



Community Events + Activities + Marketing Opportunities



Included in Business Directory on Website + Referrals

Do you want to be a part of something larger than yourself in your community?

Would you like more customers?

Do you need help in some area of your business?



A 2012 national survey, conducted by the Shapiro Group, confirms that businesses known to be Chamber members enjoyed: 49% increase in consumer favorability rating, 73% increase in consumer awareness, 68% increase in its local reputation, 80% increase in the likelihood that consumers would patronize the business in the future.

We offer visibility, credibility, support, and more for your new or growing business.



You join and contribute to something bigger than yourself when you join the Chamber.

MEMBERSHIP INVESTMENT

Non-Profit.....\$50

This tier is designed for non-profit organizations with a 501c3 status

*does not include luncheon pass

Individual - NO business affiliations.....\$100

This tier is designed for individuals only

*does not include luncheon pass

Standard Business - Less than 10 employees.....\$200

This tier is designed for businesses with less than 10 employees

*includes 1 luncheon pass for the year

Standard Business - 10+ employees.....\$400

This tier is designed for Businesses with more than 10 employees

*includes 1 luncheon pass for the year

Standard Business - 25+ employees.....\$600

This tier is designed for Businesses with more than 25 employees

*includes 2 luncheon passes for the year

